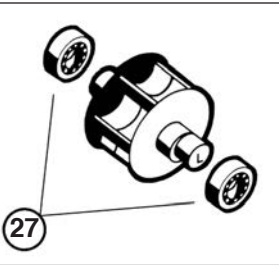
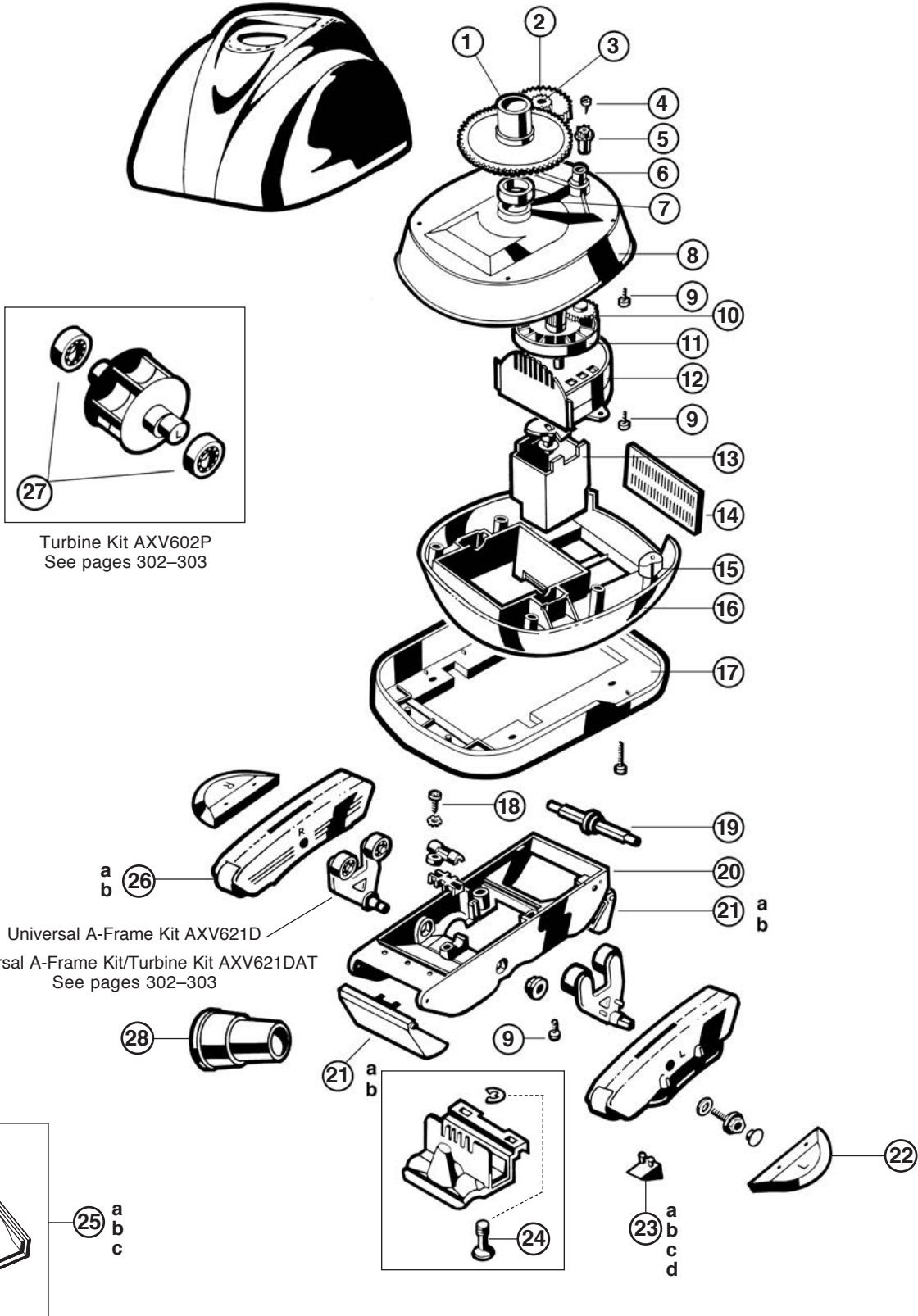


Navigator®

CONCRETE AND VINYL MODEL REPLACEMENT PARTS

Parts Diagram

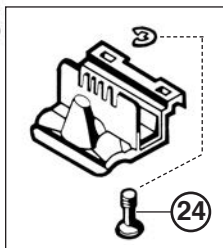


Turbine Kit AXV602P
See pages 302-303

Universal A-Frame Kit AXV621D
Universal A-Frame Kit/Turbine Kit AXV621DAT
See pages 302-303



25
a
b
c



26
a
b

23
a
b
c
d



22

Cleaners

Parts Listing

Ref. No.	Part No.	Description	Ctn. Qty.
1	AXV070	Cone Gear, Clear	10
2	AXV301	Intermediate Gear	25
3	AXV309	Intermediate Gear Shaft	50
4	AXV068	Spindle Gear Screw	50
5	AXV303	Spindle Gear	25
6	AXV066A	Spindle Gear Bushing	25
7	AXV306	Cone Gear Bushing	25
8	AXV060WH*	Upper Middle Body	10
9	AXV065P	Upper Body Screw (6 pack)	25
10	AXV064A	Medium Turbine Drive Gear	25
11	AXV062C	Medium Turbine	25
12	AXV009	Medium Turbine Case with Axle	25
13	AXV408P	Gear Box Assembly	25
14	AXV051AWH	Screen, White	50
15	AXV054FH	Float (2 pack)	25
16	AXV050CWH*	Lower Middle Body	10
17	AXV605WHP	Bumper, White	10
18	AXV313	Lower Body Screw (4 pack)	25
19	AXV031B	Flap Adjuster	25
20	AXV230DWH	Lower Body, White	10
21a	AXV434WHP	Flap Kit, White (2 flaps, front and rear springs)	50
21b	AXV434BKP	Flap Kit, Black (2 flaps, front and rear springs)	50
22a	AXV604WHP	Wing Kit, White	50
22b	AXV604BKP	Wing Kit, Black	50
23a	AXV414P	Pod Shoes, Concrete (4 pack)	25
23b	AXV413P	Pod Shoes, Vinyl (4 pack)	25
23c	AXV014CP	Pod Shoes, Ceramic (4 pack)	25
23d	AXV014SP	Pod Shoes, Slotted (4 pack)	25
24	AXV314P	Captive Screw and Retaining Clip	25
25a	AXV603	Access Cover Assembly, Concrete	25
25b	AXV603A	Access Cover Assembly, Vinyl	25
25c	AXV603CLO	Access Cover Assembly, Concrete – Large Skids	25
26a	AXV417WHP	Pod Kit, White	25
26b	AXV417BKP	Pod Kit, Black	25
27	AXV055P	Turbine Bearings (2 pack)	50
28	AXV093CP	Skimmer Cone	50
—	V574P	Flow Gauge	25
—	AXV414604WHP	Shoe and Wing Maintenance Kit	50
—	AXV621417WHP	A-Frame and Pod Tune Up Kit	10
—	AXV622604WHP	Propulsion and Wing Rebuild Kit	1

NOTE: *Replace WH on end of part number with BK for Black.