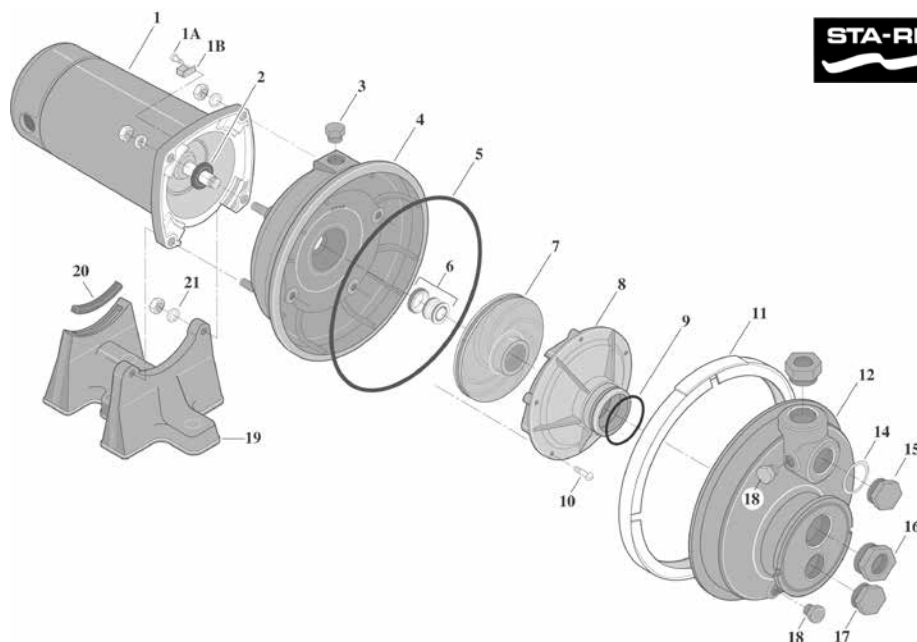


PLBC SERIES PUMP REPLACEMENT PARTS



Item	Part No.	Description
PLBC REPLACEMENT PARTS		
1	A100CHL	Motor 115/230V/60H/1 Ph.
1A	U30-692SS	Screw, 10-32 x 1/2 in.
1B	U17-568	Lug, Bonding
2	17351-0009	Slinger ¹
3	WC78-39T	Pipe Plug, 1/2 in. NPT
4	L176-47P	Tank Body - Back Half
5	U9-389	O-Ring
6	U109-93SS	Shaft Seal (Pre-1995)
6	17351-0102S	Shaft Seal
7	J105-8PACN	Impeller
8	J1-40P	Diffuser
9	U9-199	O-Ring, Diffuser
10	U30-542SS	Screw, 10-32 x 7/8 in.
11	C19-54SS	Clamp, Tank Body
12	L76-37P	Tank Body - Front Half
14	L20-40	Gasket
15	L23-4P1	Bushing
16	U78-123PT	Reducer Bushing, 1-1/4 in. x 3/4 in.
17	U78-830PT	Pipe Plug, 1 in. NPT
18	WC78-40T	Pipe Plug, 1/4 in. NPT
19	C4-42P	Base
20	C35-11	Motor Pad
21	U43-11SS	Lockwasher
NOT SHOWN		
	J3-2	Insert (Pre-1995)
	C35-5	Motor Pad (Pre-1995)
	WC78-41T	Pipe Plug, 1/8 in. NPT

¹ Replaces C69-2 (effective 9/00).

CALIFORNIA PROPOSITION 65 WARNING
 ⚠️ **WARNING:** Cancer and Reproductive Harm.
 ⚠️ **AVERTISSEMENT:** Peut Causer le Cancer et des Dommages au Système Reproducteur.
 ⚠️ **ADVERTENCIA:** Cáncer y Daño Reproductivo.
www.p65warnings.ca.gov PH202114