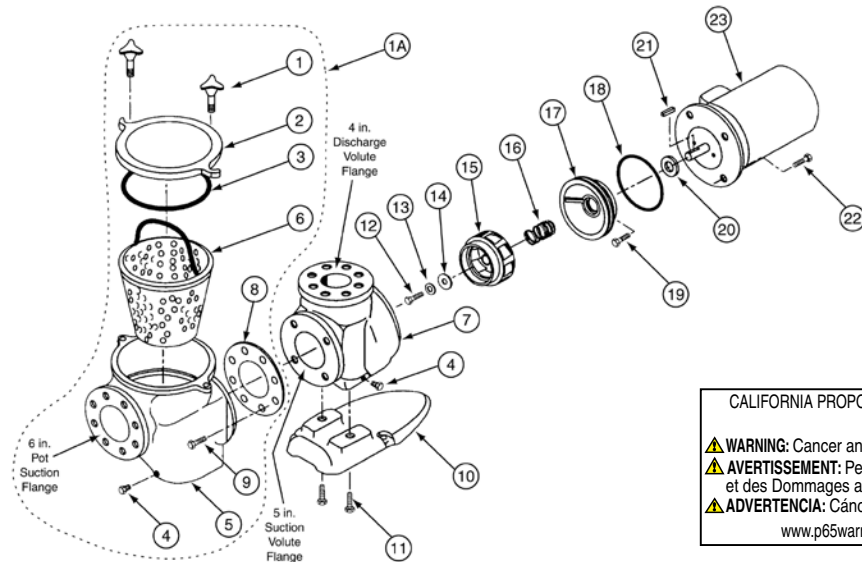


C SERIES® HIGH PERFORMANCE COMMERCIAL PUMP

REPLACEMENT PARTS



CALIFORNIA PROPOSITION 65 WARNING
 ⚠️ **WARNING:** Cancer and Reproductive Harm.
 ⚠️ **AVERTISSEMENT:** Peut Causer le Cancer et des Dommages au Système Reproducteur.
 ⚠️ **ADVERTENCIA:** Cáncer y Daño Reproductivo.
www.p65warnings.ca.gov P652017A

Item	Part No.	Ref. No.	Description
C SERIES PUMPS			
1	075280	54475280618	Hand nut assembly, bronze, 2 req.
1A	072747		C series pot assembly 1
2	075275	26075275219	Cover, C16, bronze
3	071433	3640525457	O-ring, C-18
4	071551	6000002190	Plug pipe, 1/4 in. bronze, 1 req.
5	075271Z	79675271199	Pot mach. bronze
6	072795	70472795100	Basket, C-29 SS 11 in.
7	075273Z	18075273199	Volute, C-2 bronze
8	070943	36470943603	Gasket flange, P-135, 5 in.
9	071683	1680634104	Screw, 3/4-10, 1-3/4, SS, 4 req.
10	075287	82075287632	Foot, C-4 coated
11	071688	1680558359	Screw, 5/8, 11 x 1 stl. hh., 2 req.
12	071037	1680115104	Impeller, C-35 lock screw
13	071048	90871048212	Impeller, washer, C-71
14	075713	3642034603	Impeller, washer gasket
15	073828	44473328208	Impeller, CH-50/CHK-50/CHKL-50, 5HP, 1PH, 3PH, high hd.
15	070228	44470228208	Impeller, CM-50/CMK-50/CMKL-50, 5HP, 1PH, 3PH, med. hd.
15	073829	44473829208	Impeller, CH-75/CHK-75/CHKL-75, 7.5HP, 1PH, 3PH, high hd.
15	070227	44470227208	Impeller, CM-75/CMK-75/CMKL-75, 7.5HP, 1PH, 3PH, med. hd.
15	073830	44473830208	Impeller, CH-100/CHK-100/CHKL-100, 10HP, 1PH, 3PH, high hd.

Item	Part No.	Ref. No.	Description
15	070226	44470226208	Impeller, CM-100/CMK-100/CMKL-100, 10HP, 1PH, 3PH, med hd.
15	073831	44473831208	Impeller, CHK-150/CHKL-150, 15HP, 3PH, high hd.
15	070225	44470225208	Impeller, CMK-150/CMKL-150, 15HP, 3PH, med hd.
15	073832	44473832208	Impeller, CHK-200/CHKL-200, 20HP, 3PH, high hd.
16	071725S	71271725753	Seal, C-7, PS-360
17	070906	11670906199	Flange, mach., C-52 brass
18	071423	3640508457	O-ring, C-70
19	071681	1680378104	Screw, 3/8, 16 x 7/8 in. CS hh., 2 req.
20	072185	7641043478	Water slinger, C-115
21	071046	4720201104	Impeller, key, 3/16 in.
22	071687	1680155113	Screw, 1/2, 13 x 1-1/4 stl. hh., 4 req.
60 HERTZ MOTORS			
23	357205S		Motor package, 5HP, 1PH, 200/208V
23	071366S	52571366999	Motor package, 5HP, 1PH, 230V
23	357206S		Motor package, 5HP, 3PH, 200/208V
23	071364S	52571364999	Motor package, 5HP, 3PH, 208-220/440
23	357207S		Motor package, 7-1/2 HP, 1PH, 200/208V
23	357204S	525357204999	Motor package, 7-1/2 HP, 1PH, 230V
23	357208S		Motor package, 7-1/2 HP, 3PH, 200/208V
23	071365S	52571365999	Motor package, 7-1/2 HP, 3PH, 208-220/440V

C SERIES® HIGH PERFORMANCE PUMP (CONT'D)

REPLACEMENT PARTS

Item	Part No.	Ref. No.	Description
C SERIES PUMPS			
60 HERTZ MOTORS (Cont'd)			
23	357247S		Motor package, 7.5HP, 3PH, 575V
23	357209S		Motor package, 10HP, 3PH, 200/208V
23	357249S		Motor package, 10HP, 1PH, 230V
23	071363S	52571363999	Motor package, 10HP, 3PH, 208-220/440V
23	357238S		Motor package, 10HP, 3PH, 575V
23	357210S		Motor, package 15HP, 3PH, 200/208V
23	071361S	52571361999	Motor package, 15HP, 3PH, 208-220/440V
23	357245S		Motor package, 15HP, 3PH, 575V
23	357211S		Motor package, 20HP, 3PH, 200/208V
23	071362S	52571362999	Motor package, 20HP, 3PH, 208-220/440V
23	357246S		Motor, package 20HP, 3PH, 575V
50 HERTZ MOTORS			
23	072737S	52572737999	Motor, 5HP, 3PH, 380/415V
23	072739S	52572739999	Motor, 7.5HP, 3PH, 380/415V
23	072740S	52572740999	Motor, 10HP, 3PH, 380/415V
23	072742S	52572742999	Motor, 15HP, 3PH, 380/415V
23	072744S	52572744999	Motor, 20HP, 3PH, 380/415V
Motor subassemblies include items No.12 -21 and 23			
	073260	A073260	Motor, sub assembly, CM-50
	073262	A073262	Motor, sub assembly, CMK-50 ²
	073264	A073264	Motor, sub assembly, CH-50
	073265	A073265	Motor, sub assembly, CHK-50 ²
	073263	A073263	Motor, sub assembly CMK-75 ²
	073266	A073266	Motor, sub assembly CHK-75 ²
	073680	A073680	Motor, sub assembly CMK-100 ²
	073267		Motor, sub assembly CHK-100 ²
	073261	A073261	Motor, sub assembly CMK-150 ²
	073268	A073268	Motor, sub assembly CHK-150 ²

Item	Part No.	Ref. No.	Description
	073269	A073269	Motor, sub assembly CHK-200 ²
	357910	A357910	Motor, sub assembly CH-75, 1PH, 230V ³
	357930	A357930	Motor, sub assembly CM-75, 1PH, 200V ³
	357935	A357935	Motor, sub assembly CH-75, 1PH, 200V ³
	357250		Motor, sub assembly CH-100, 10HP, 1PH, 230V
	357251		Motor, sub assembly CM-100, 1PH, 230V
	014700	A014700	Motor, sub assembly CMKL-50 380/415V ⁴
	014801	A014801	Motor, sub assembly CHKL-50 380/415V ⁴
	014701	A014701	Motor, sub assembly CMKL-75 380/415V ⁴
	014802	A014802	Motor, sub assembly CHKL-75 380/415V ⁴
	014702	A014702	Motor, sub assembly CMKL-100 ⁴
	014803	A014803	Motor, sub assembly CHKL-100 ⁴
	014703	A014703	Motor, sub assembly CMKL-150 ⁴
	014804	A014804	Motor, sub assembly CHKL-150 ⁴
	014805	A014805	Motor, sub assembly CHKL-200 ⁴

¹ Includes: 2 of item No. 1, 1 each of items No. 2 thru No. 6, 1 of item No. 8 and 4 of item No. 9.

² All motor subassemblies are 60 Hertz 220/440V, 3 phase.

³ All motor subassemblies are single phase 60 Hertz.

⁴ All motor subassemblies are 50 Hertz 380/415V, 3 phase.

Notes:

- All bronze C-series parts will retrofit older cast iron models.
- Standard flange not included with pump.
- For all 200/208V applications, use 200/208V motors only.

CALIFORNIA PROPOSITION 65 WARNING

▲ **WARNING:** Cancer and Reproductive Harm.
▲ **AVERTISSEMENT:** Peut Causer le Cancer et des Dommages au Système Reproducteur.
▲ **ADVERTENCIA:** Cáncer y Daño Reproductivo.

www.p65warnings.ca.gov. PH2017A