

# FULLFLOW® VALVES

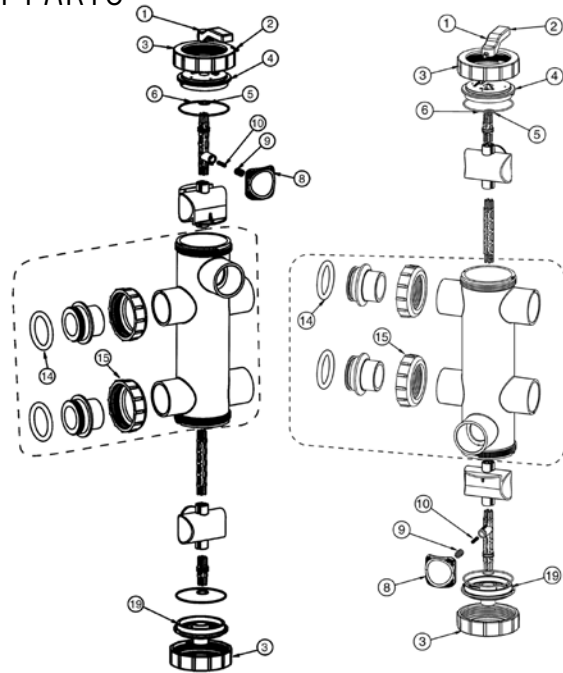
## REPLACEMENT PARTS

Item	Part No.	Description
<b>FULLFLOW VALVES</b>		
1	278006	Handle
2	072536	Screw
3	278020	Cap, nut, 2 req.
4	278021	Cap, insert - top.
5	192039Z	O-ring #2-116 Bunan, 2 req.
6	275300	O-ring #2-154 Bunan 70, 2 req.
8	278019	Seal, waste.
9	271065	Spring, .42 o. d..
10	270006	Spring, .24 o. d..
14	274494	O-ring, adapter, 2 req.
15	274440	Nut, adapter, 2 req. <sup>1</sup>
19	278022	Cap insert, bottom
20	270011	Shaft Assembly

<sup>1</sup> Items may not be purchased separately, order item #20, Shaft Assy.

CALIFORNIA PROPOSITION 65 WARNING

⚠ **WARNING:** Cancer and Reproductive Harm.  
 ⚠ **AVERTISSEMENT:** Peut Causer le Cancer et des Dommages au Système Reproducteur.  
 ⚠ **ADVERTENCIA:** Cáncer y Daño Reproductivo.  
[www.p65warnings.ca.gov](http://www.p65warnings.ca.gov)



FullFlow Sand Valve  
263010  
7-1/2 in. Centerline  
Filters

FullFlow D. E. Valve  
263011  
7-1.2 in. Centerline  
Filters

# PUSH PULL™ VALVE

## REPLACEMENT PARTS FOR AMERICAN VALVES

Item	Part No.	Description
<b>PUSH PULL VALVES</b>		
1	51013811	Valve stem complete, w/ handle
2	51013011	Nut
3	51013500	O-ring, nut
4	51013111	Reducer bushing, 2 in. male x 1-1/2 in.
5	6020006	O-ring, cap
6	51012911	Cap
8	51005000	O-ring, valve stem, 2 in., 2 req.
9	273062	O-ring, bulkhead, 8 in. model only
10	51013500	O-ring, bulkhead, 8 in. model only
11	274494	O-ring, bulkhead, 7-1/2 in. model only

Both items 9 and 10 are included in the kit for multiple applications. Choose only the one set appropriate for your application.

CALIFORNIA PROPOSITION 65 WARNING

⚠ **WARNING:** Cancer and Reproductive Harm.  
 ⚠ **AVERTISSEMENT:** Peut Causer le Cancer et des Dommages au Système Reproducteur.  
 ⚠ **ADVERTENCIA:** Cáncer y Daño Reproductivo.  
[www.p65warnings.ca.gov](http://www.p65warnings.ca.gov)

### MODELS

263064 (7-1/2 in. centerline)

50290211 (8 in. centerline)

